



# FALCONS

## Toyota LC300 3.5L TT GR SPORT AT

### Car Details

|                     |             |                  |       |
|---------------------|-------------|------------------|-------|
| <b>Make</b>         | Toyota      | <b>Model</b>     | LC300 |
| <b>Type</b>         | Suv         | <b>Year</b>      | 2022  |
| <b>Transmission</b> | Automatic   | <b>Cylinders</b> | V6    |
| <b>Fuel</b>         | Petrol      | <b>Code</b>      | GR001 |
| <b>Location</b>     | UAE - Dubai | <b>Price</b>     | 0     |

### Technical Features

|                                   |                    |                                 |            |
|-----------------------------------|--------------------|---------------------------------|------------|
| <b>DIMENSIONS (Lx Wx H) mm</b>    | 5015 x 1980 x 1890 | <b>WHEEL BASE mm</b>            | 2850       |
| <b>GROUND CLEARANCE mm</b>        | 235                | <b>MIN. TURNING RADIUS (M)</b>  | 5.9        |
| <b>GROSS VEHICLE WEIGHT (Kgs)</b> | 3230               | <b>FUEL TANK CAPACITY Ltrs.</b> | 110 (DUAL) |
| <b>DISPLACEMENT cc</b>            | 3445               | <b>HP (SAE NET) / RPM</b>       | 409        |
| <b>TORQUE (SAE NET) KgM /RPM</b>  | 66.2               | <b>TIRE SIZE</b>                | 265/65R18  |

### Interior Features

|  |  |
|--|--|
| TELESCOPIC STEERING : POWER/TILT + STEERAGE ACT / WITH (POWER) + MEMORY  | AIR BAG : D + P + KNEE (D+P) + CURTAIN + SIDE (FR+RR1)   |
| ACCESSORY METER : 7 "MULTI INFORMATION DISPLAY   | CONSOLE BOX : (SYNTHETIC LTHR) WITH REAR AC VENT/COOL BOX  |
| DRIVE MODES : 5 MODES + CUSTOM (CUSTOM+NORMAL+ECO+COMFORT+SPORT S+SPORT S +)   | INNER REAR VIEW MIRROR : ELECTROCHROMIC  |
| FR. SEAT Fr. SEAT BELT : 3PELRx2 + PT + FL(1), HEADREST - 2 (GRS LOGO), POWER SEAT (D+P)+DRIVER (MEMORY) & VERTICAL SEAT ADJUSTER WITH (D+P:POWER) | RR. SEAT Rr. SEAT BELT : 3PELRx5, HEAD REST - 3 (2ND ROW) + 2 (3RD ROW), 2ND ROW 40:20:40 & 3RD ROW 50:50 FLAT FOLDING (POWER) |
| SEAT MATERIAL : SMOOTH LEATHER   | SEATING CAPACITY : 7   |
| STEERING WHEEL : LEATHER + WOOD(TYPE2 GRAY) +  | SUN VISOR : D+P+VANITY MIRROR+BULB(LED)+SLIDE  |



# FALCONS

|  |   |
|--|---|
| CHROME + AUDIO + MID + BT + VOICE + MID+BT+DRCC + LDA  |   |
| AC/HEATER : 4 ZONE AUTO  | CRUISE CONTROL : DYNAMIC RADAR CRUISE CONTROL (DRCC)  |
| ILLUMINATED ENTRY SYSTEM : IGN. SW + ROOM LAMP + FRONT & REAR SCUFF PLATE ILLUM + LOUNGE ILLUMINATION (FRONT +REAR1 FOOT LAMP + DOOR INSIDE HANDLE)+WELCOME LIGHTS | KEYLESS ENTRY : SMART ENTRY (ALL DOORS) + PUSH START+PBD (HIGH)                                   |
| POWER ANTENNA : GLASS INTEGRATED   | POWER DOOR LOCK : SPEED LOCK + CRACKUP UNLOCK + PASSENGER LOCK S/W                                |
| POWER WINDOW   | RADIO : AM/FM   |
| STEREO : 12.3" NAVIGATION SYSTEM W/14 JBL SPKS   | WINDOW DEFOGGER   |
| WIPER FR : INTERMITTENT + RAIN SENSOR  | WIPER RR : INTERMITTENT   |
| ANTI THEFT SYSTEM W/SECURITY HORN  | BACK CAMERA : MULTI TERRAIN 3D + PANAROMIC VIEW MONITOR(PVM) : FRONT1+SIDE2+REAR1                 |
| CHILD RESTRAINT SYSTEM : WITH (SEAT) X2  | COMBINATION METER : OPTITRON TYPE   |
| EMBLEM : 70TH ANNIVERSARY + TWIN TURBO   | FLOOR MATS (GRS)  |
| HEADLAMP LEVELING FUNCTION : DYNAMIC AUTO + AUTO HIGH BEAM / ADAPTIVE HIGH BEAM SYSTEM(AHS)  | HEADLAMPS : (LOW / HIGH) - LED + LED DRL + SEQUENTIAL INDICATORS + AHS + AHB-TYPE2 PROJECTOR TYPE |
| HEADUP DISPLAY 9"  | MULTI TERRAIN SELECTOR : (H4 &L4)+AUTO  |
| PARKING SENSORS : PARKING SUPPORT ALERT/BRAKE(PKSB) (OBJECT + VEHICLE / FR4 + RR4) + RCD   | TOWING HITCH OR PINTLE HOOK : TOWING HITCH  |
| RADIATOR GRILLE : CHROME(GRS)  | REAR ENTERTAINMENT SYSTEM : 11.6" : TYPE2 + HEADPHONES  |
| REAR LUGGAGE DOOR : HATCH TYPE : POWER BACK DOOR + AUTO/EASY CLOSER DOOR   | REMOTE ENGINE STARTER (1-WAY)   |
| SEAT AIR CONDITIONING : FRONT (D+P) + REAR (1ST ROW)   | SPARE WHEEL CARRIER : FLOOR W/ LOCK   |
| FIRE EXTINGUISHER  | GRADE MARK (GRS)  |
| PARKING BRAKE : ELECTRIC TYPE+BRAKE HOLD   | REAR COMBINATION LAMP : LED+SEQUENTIAL  |
| WOODGRAIN PACKAGE : (CONSOLE BOX+STEERING+DOOR TRIM)-TYPE2 GRAY  | TOYOTA SAFETY SENSE : "Dynamic Radar Cruice Control (DRCC)  |
| Pre Collision Safety System (PCS)  | Automatic High Beam (AHB)   |
| Adaptive High Beam System (AHS): New   | Lane Departure Alert (LDA)  |
|  |   |



|   |   |
|---|---|
| Lane Tracing Assist (LTA) with Steering Vibration | Parking Brake Support :PKSB(Objects/Vehicles FR4+RR4) |
| Blind Spot Monitor :BSM(Outside Mirror)           | Rear Cross Traffic Alert (RCTA)                       |
| Rear Camera Detection Alert (RCD)"                | DOOR INSIDE HANDLE : PLATING                          |
| INSTRUMENT PANEL : HIGH                           | TIRE PRESSURE MONITORING SYSTEM                       |
| USB FAST CHARGER : FR1 + RR1(2) + RR2(2)          | VEHICLE DYNAMIC MANAGEMENT                            |
| WIRELESS CHARGER                                  | -   |

## Exterior Features

|  |   |
|--|---|
| TYPE : V6, DOHC - TWIN TURBO   | FUEL SYSTEM : EFi, DUAL VVTi ENGINE, EURO 4 (W/O OBD)                     |
| FUEL TYPE : UNLEADED GASOLINE  | T/M : 10- A/T MULTI MODE  |
| 4WD OPTIONS : FULL TIME  | DIFF. OPTION : TORQUE SENSING CENTRE LSD + (CENTRE +FRONT+REAR) DIFF LOCK |
| WHEEL CAP : ALLOY (GRS)  | FRONT/REAR BRAKE : VENT.DISC  |
| FRONT SUSPENSION : DBL WISHBONE(IND.) -EKDSS   | REAR SUSPENSION : 4 LINK -EKDSS   |
| ABS + BA + VSC + ATRC + TSC + HAC + CRAWL + DAC + TA   | BUMPER FR. & RR. : GRS  |
| DOOR HANDLES : GLOSS BLACK   | HIGH MOUNT STOP LAMP  |
| POWER OUTER MIRRORS : COLOUR KEYED GLOSS BLACK<br>W/TURN SIGNAL + MEMORY + MULTI TERRAIN 3D<br>CAMERA+WELCOME LIGHT & RETRACTABLE (AUTO) + ECM<br>+ REVERSE LINK | SIDE STEP : ALLUMITE  |
| SPOILER  | SUN/MOON ROOF   |
| ROOF RAIL (GRS)  | REAR FOG LAMP   |
| FRONT FOG LED LAMP   | HEADLAMP CLEANERS   |
| WINDSHIELD GLASS : GREEN W/TOP BAND + HEAT SHIELD +<br>LAMINATED   | -   |





FALCONS







FALCONS







FALCONS







FALCONS











FALCONS







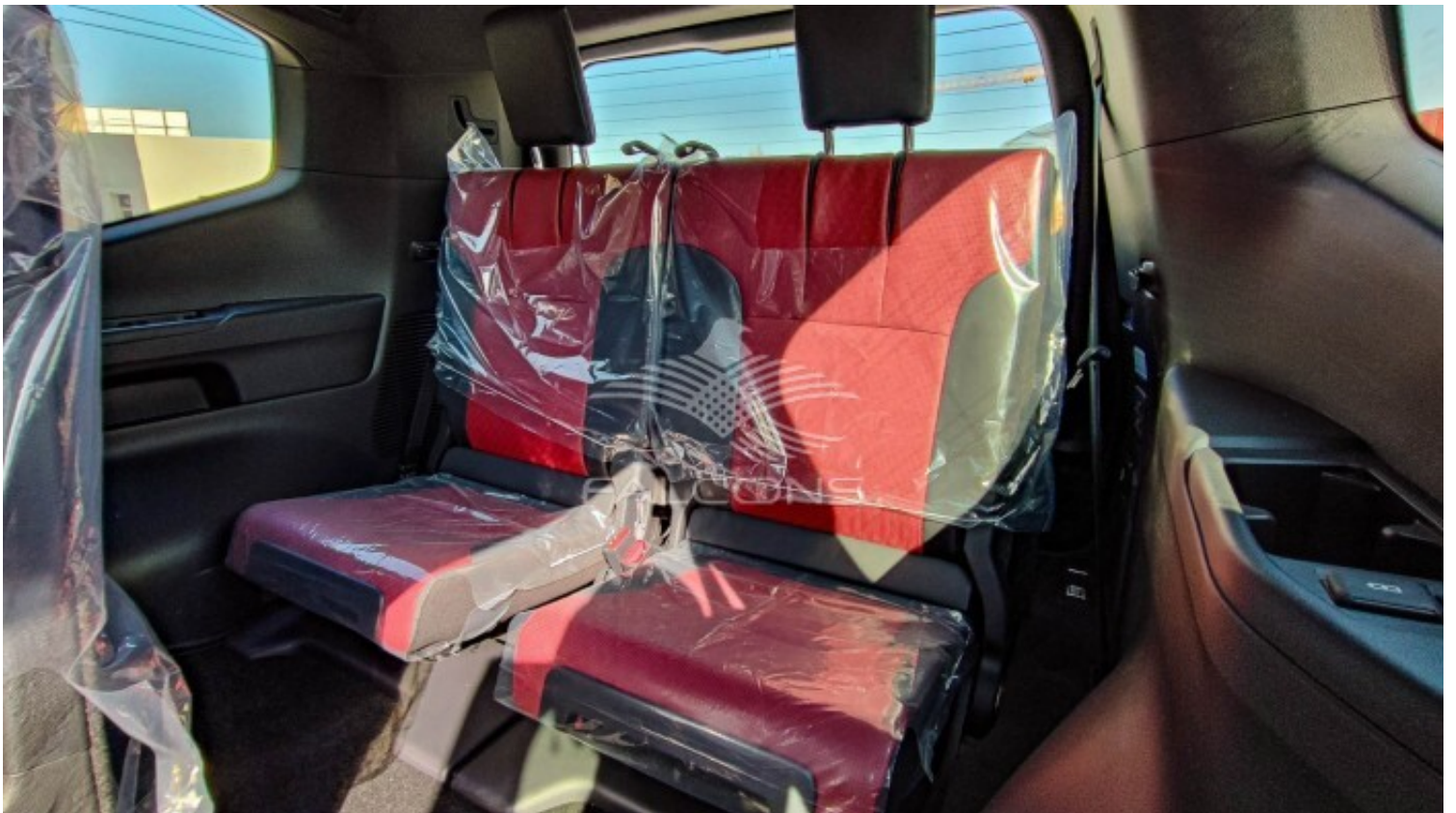








FALCONS







FALCONS







## Notes

All Pictures shown are for illustration purpose only Specifications may change without prior notice.

This vehicle available in Different colors